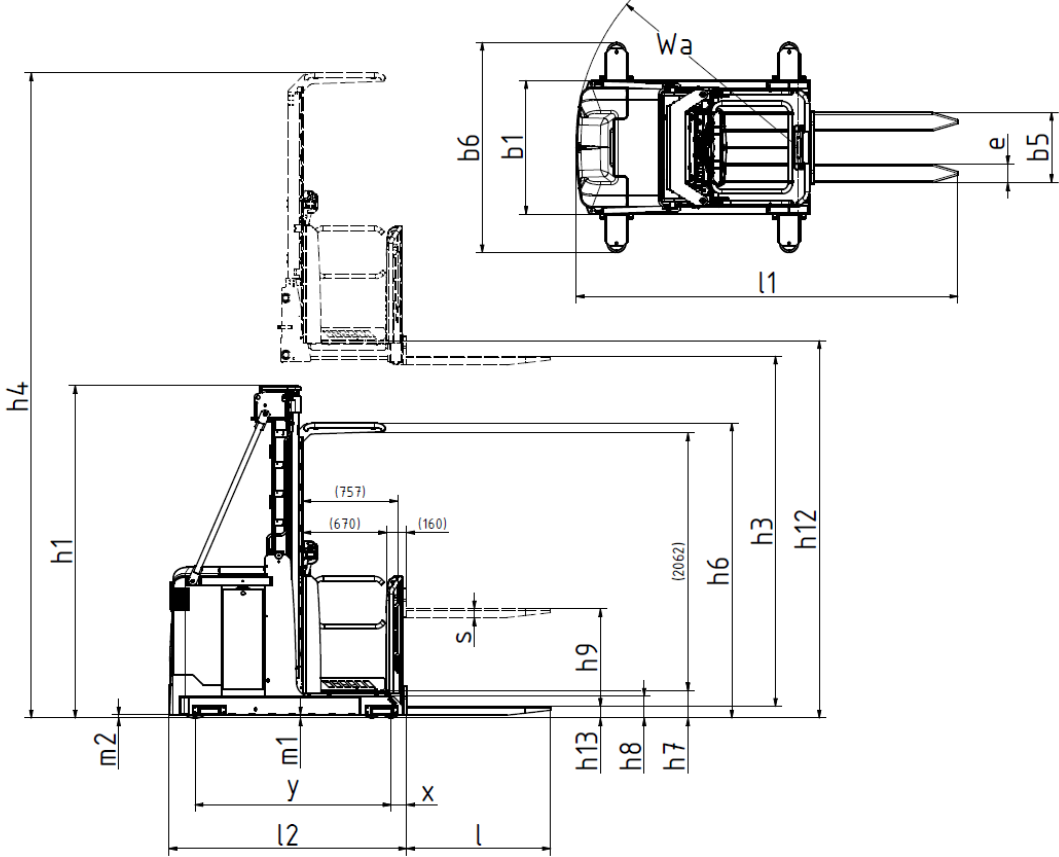


Medium Level Order Pickers

EOC 100

1000 kg medium level order picker.
 Providing picking heights up to 9.8m. Combining great performance with high levels of safety.



Mast type	Lift height H / h12	Height of mast lowered h1	Max mast height h4
Standard/Duplex			
Triplex	5200	2370	7360
	5500	2470	7660
	6100	2670	8260
	6550	2820	8710
	7000	2970	9160
	7800	3237	9960
	8250	3387	10410



Distinguishing mark	1.2	Manufacturer's type designation		EOC 100	
	1.3	Drive: electric (battery or mains), diesel, petrol, fuel gas		Electric	
	1.4	Operator type: hand, pedestrian, standing, seated, order-picker		Order picker	
	1.5	Load capacity/rated load	Q	t	1
	1.6	Load centre distance	c	mm	400-600
	1.8	Load distance, centre of load axle to fork	X		204
Weight	1.9	Wheelbase	y	mm	1568
	2.1	Service weight incl battery		kg	2060 kg + 91,5 x h12 (m)
	2.2	Axle loadings with nominal load & maximum battery weight, drive / load side		kg	1210/2910
Tyres, chassis	2.3	Axle loadings without load & with maximum battery weight, drive / load side		kg	1790/1330
	3.1	Tyres			Vulcollan
	3.2	Tyre size, drive side		mm	250x105
Dimensions	3.3	Tyre size, load side		mm	150x55
	3.5	Wheels, number front/rear (drive side/load side, x = driven wheels)			1x8
	3.7	Track, load side	b11	mm	906/1006
	4.2	Height, mast lowered	h1	mm	h12/3+637
	4.4	Lift height H = h13+h3	H	mm	4885-8035
	4.5	Height, mast extended	h4	mm	h12+2160
	4.7	Height of overhead guard (cabin)	h6	mm	2356
	4.8	Seat height/stand height	h7	mm	215-h12
	4.10	Height of wheel arms	h8	mm	175
	4.11	Additional lift	h9	mm	775
	4.14	Stand height, elevated	h12	mm	5200-8250
	4.15	Height lowered	h13	mm	90
	4.19	Overall length	l1	mm	3135
	4.20	Length to face of forks	l2	mm	1982
	4.21	Overall width	b1	mm	1070/1170
	4.22	Fork dimensions	s/e/l	mm	70/147/1150
	4.24	Width of fork carriage	b3		560
	4.25	Width over forks, min/max	b5		450 - 800
	4.27	Width across guide rollers	b6	mm	1248-1814
	4.32	Ground clearance, centre of wheelbase	m2	mm	25
4.34	Aisle width for pallet 800 x 1200, lengthwise	Ast	mm	Platform or load width + clearance	
4.35	Turning radius	Wa	mm	1790	
Performance data	5.1	Travel speed, with/without load		km/h	11/11
	5.1.1	Travel speed with/without load, backwards		km/h	11/11
	5.2	Lift speed, with/without load		m/s	0,26/0,37
	5.3	Lowering speed, with/without load		m/s	0,45/0,43
	5.8	Max gradeability, with / without load, 5 min rating		%	7,1
	5.9	Acceleration time 0-10 m, with/without load		s	6,3/5,8
Electric engine	5.10	Service brake: electric, hydraulic			Electric
	5.10.1	Parking brake: electric, hydraulic			Electric
	6.1	Drive motor, rating S2 60 min		kW	2,7
	6.2	Lift motor		kW	8 (20%)
	6.3	Battery according to DIN 43531/35/36	A,B,C		BS
	6.4	Battery voltage / Battery capacity		V/Ah	24/560-775
Additional data	6.5	Battery weight		kg	Min 500 Max 700
	6.6	Power consumption according to VDI cycle		kWh/h	
	8.1	Speed regulation			AC traction
	10.7	Noise level at operator's ear, according to EN 12 053		db(A)	66