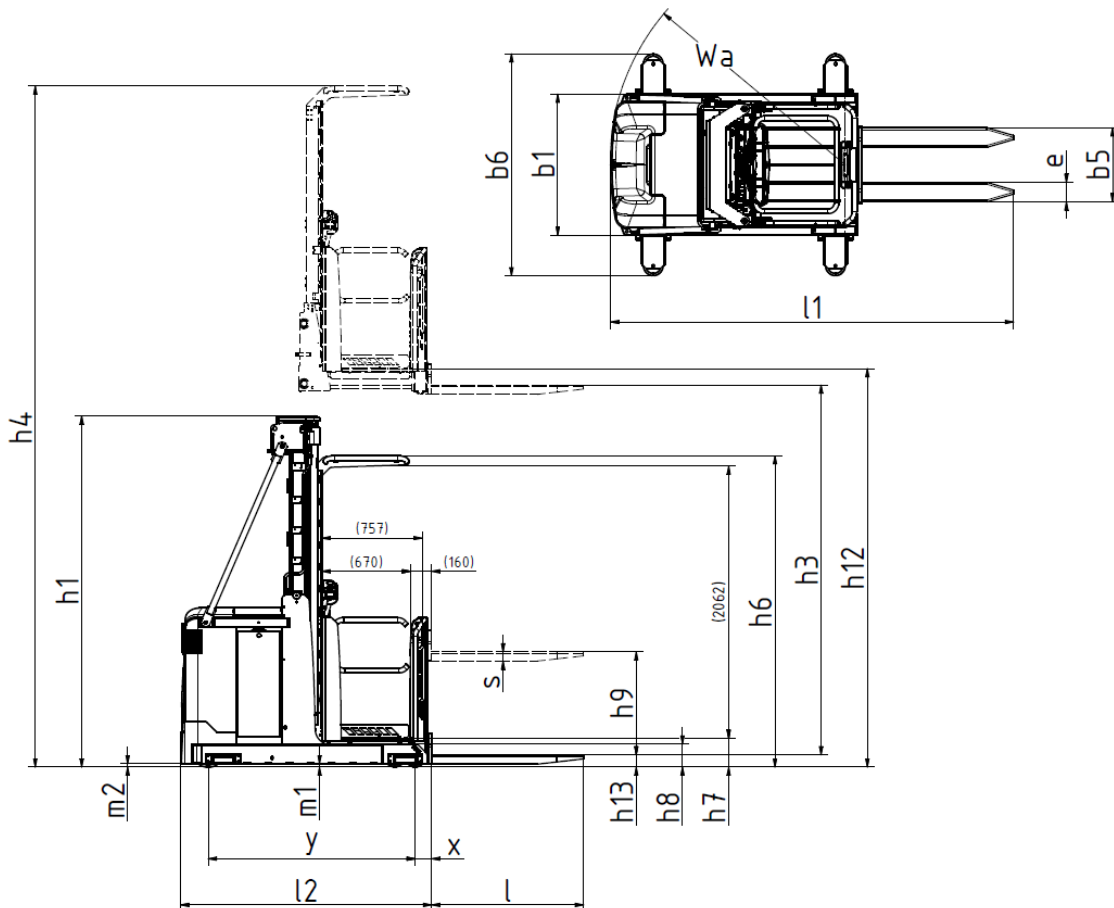


High Level Order Pickers

EOH 125

1250 kg high level order picker.
 Providing picking heights up to 12.1m. Combining great performance with high levels of safety.



Mast type	Lift height H / h12	Height of mast lowered h1	Max mast height h4
Standard/Duplex			
Triplex	6000	2770	8160
	6750	3020	8910
	7500	3270	9660
	8250	3520	10410
	9000	3770	11160
	9750	4020	11910
	10500	4270	12660

Distinguishing mark	1.2	Manufacturer's type designation		EOH 125		
	1.3	Drive: electric (battery or mains), diesel, petrol, fuel gas		Electric		
	1.4	Operator type: hand, pedestrian, standing, seated, order-picker		Order picker		
	1.5	Load capacity/rated load	Q	t	1,25	
	1.6	Load centre distance	c	mm	400-600	
	1.8	Load distance, centre of load axle to fork	X		126	
	1.9	Wheelbase	y	mm	1760	
Weight	2.1	Service weight incl battery		kg	2720 kg + 97 x h12 (m)	
	2.2	Axle loadings with nominal load & maximum battery weight, drive / load side		kg	1780 / 3510	
	2.3	Axle loadings without load & with maximum battery weight, drive / load side		kg	2390 / 1650	
Tyres, chassis	3.1	Tyres			Vulcollan	
	3.2	Tyre size, drive side		mm	355x155	
	3.3	Tyre size, load side		mm	150x55	
	3.5	Wheels, number front/rear (drive side/load side, x = driven wheels)				1x/8
	3.6	Track, drive side	b10	mm		0
	3.7	Track, load side	b11	mm		1006/1186
Dimensions	4.2	Height, mast lowered	h1	mm		h12/3+770
	4.4	Lift height H = h13+h3	H	mm		5785-10285 (without h9)
	4.5	Height, mast extended	h4	mm		h12+2160
	4.7	Height of overhead guard (cabin)	h6	mm		2356
	4.8	Seat height/stand height	h7	mm		215-h12
	4.10	Height of wheel arms	h8	mm		175
	4.11	Additional lift	h9	mm		775
	4.14	Stand height, elevated	h12	mm		6000-10500
	4.15	Height lowered	h13	mm		90
	4.19	Overall length	l1	mm		3290
	4.20	Length to face of forks	l2	mm		2139
	4.21	Overall width	b1	mm		1170/1350
	4.22	Fork dimensions	s/e/l	mm		70/147/1150
	4.24	Width of fork carriage	b3	mm		560
	4.25	Width over forks, min/max	b5	mm		450 - 800
4.27	Width across guide rolls	b6	mm		1348-1814	
4.32	Ground clearance, centre of wheelbase	m2	mm		25	
4.34	Aisle width for pallet 800 x 1200, lengthwise	Ast	mm		Platform or load width + clearance	
4.35	Turning radius	Wa	mm		2020	
Performance data	5.1	Travel speed, with/without load		km/h		12/12
	5.1.1	Travel speed with/without load, backwards		km/h		12/12
	5.2	Lift speed, with/without load		m/s		0,36/0,44
	5.3	Lowering speed, with/without load		m/s		0,45/0,41
	5.8	Max gradeability, with / without load, 5 min rating		%		6,2
	5.9	Acceleration time 0-10 m, with/without load		s		5,5/5,2
	5.10	Service brake: electric, hydraulic				Electric
5.10.1	Parking brake: electric, hydraulic				Electric	
Electric	6.1	Drive motor, rating S2 60 min		kW		5,9
	6.2	Lift motor		kW		11
	6.3	Battery according to DIN 43531/35/36	A,B,C			DIN 43531 B
	6.4	Battery voltage / Battery capacity			V/Ah	48/500-620
	6.5	Battery weight			kg	Min 890 Max 1125
	6.6	Power consumption according to VDI cycle			kWh/h	
Additional data	8.1	Speed regulation				AC traction
	10.7	Noise level at operator's ear, according to EN 12 053		db(A)		65