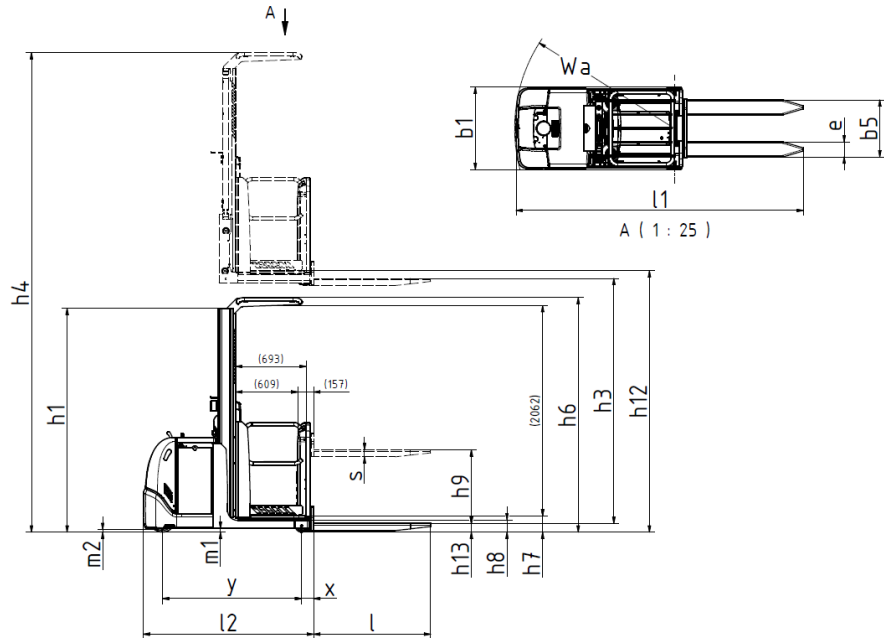


MEDIUM LEVEL ORDER PICKER

EOM 100 (1200 mm)

State-of-the-art ergonomics and excellent lift/drive performance to give high levels of productivity.



Mast type	Lift height H / h12	Height of mast lowered h1	Max mast height h4
Standard/Duplex	1130	1596	1596
Triplex			

Distinguishing mark	0	Specification				
	1.2	Manufacturer's type designation		EPL 100 (1200 mm)		
	1.3	Drive: electric (battery or mains), diesel, petrol, fuel gas		Electric		
	1.4	Operator type: hand, pedestrian, standing, seated, order-picker		Order picker		
	1.5	Load capacity/rated load	Q	t	1000	
	1.6	Load centre distance	c	mm	400-600	
	1.8	Load distance, centre of load axle to fork	X		100 (Fixed fork)	
	1.9	Wheelbase	y	mm	1371	
	Weight	2.1	Truck weight without load, with maximum battery weight		kg	2500
2.2		Axle loadings with nominal load & maximum battery weight, drive / load side		kg	470 / 2030	
2.3		Axle loadings without load & with maximum battery weight, drive / load side		kg	990/510	
2.4		Axle load, fork outreached with load, front / rear		kg		
2.5		Axle load, fork retracted with load, front / rear		kg		
Tyres, chassis	3.1	Tyres			Vulcollan	
	3.2	Tyre size, drive side		mm	250/105	
	3.3	Tyre size, load side		mm	120/115	
	3.4	Dimensions additional wheels (castor wheels)		mm		
	3.5	Wheels, number front/rear (drive side/load side, x = driven wheels)			1/2	
	3.6	Track, drive side	b10	mm	0	
	3.7	Track, load side	b11	mm	674	
Dimensions	4.1	Tilt of mast/fork carriage, forward/backward		Grad		
	4.2	Height, mast lowered		h1	mm	1630
	4.3	Free lift		h2	mm	
	4.4	Lift height H = h13+h3		H	mm	1130
	4.5	Height, mast extended		h4	mm	2671
	4.6	Straddle lift		h5	mm	
	4.7	Height of overhead guard (cabin)		h6	mm	(2300)
	4.8	Seat height/stand height		h7	mm	160/1200
	4.10	Height of wheel arms		h8	mm	115
	4.11	Additional lift		h9	mm	-
	4.14	Stand height, elevated		h12	mm	
	4.15	Height lowered		h13	mm	90
	4.19	Overall length		l1	mm	2805
	4.20	Length to face of forks		l2	mm	1655
	4.21	Overall width		b1	mm	810
	4.21.1	Width over stabilizers			mm	
	4.22	Fork dimensions		s/e/l	mm	70/147/1150
	4.23	Fork carriage to ISO 2328, clas / form A, B				
	4.24	Width of fork carriage		b3	mm	560
	4.25	Width over forks, min/max		b5	mm	450-700
	4.26	Distance between wheel arms		b4	mm	
	4.27	Width across guide rolls		b6	mm	
	4.28	Reach distance		l4	mm	
	4.29	Reach lateral		b7	mm	
	4.30	Reach lateral from vehicle centerline		b8	mm	
	4.31	Ground clearance, mast		m1	mm	35
	4.32	Ground clearance, centre of wheelbase		m2	mm	35
	4.33	Aisle width with pallet 1000 x 1200, crosswise		Ast	mm	
	4.34	Aisle width for pallet 800 x 1200, lengthwise		Ast	mm	Min AST = B3 + 180 = 960 mm (S1)
	4.35	Turning radius		Wa	mm	1570
4.37	Length incl reach legs		l7	mm		
4.38	Distance to swivelling-fork pivot		0	mm		
Performance data	5.1	Travel speed, with/without load		km/h	9/12	
	5.1.1	Travel speed with/without load, backwards		km/h		
	5.2	Lift speed, with/without load		m/s	0,12/0,20	
	5.3	Lowering speed, with/without load		m/s	0,25/0,23	
	5.4	Reach speed, with / without load		m/s		
	5.7	Gradient, with/without load		%	10,3%/18%	
	5.8	Max gradeability, with / without load, 5 min rating		%	10,4%/22,5%	
	5.9	Acceleration time 0-10 m, with/without load		s	5,6/4,9	
	5.10	Service brake: electric, hydraulic			El. - magnetic	
	5.10.1	Parking brake: electric, hydraulic			Electric	
Electric engine	6.1	Drive motor, rating S2 60 min		kW	Letrika 2,7kW	
	6.2	Lift motor		kW	2,2kW (5%)	
	6.3	Battery according to DIN 43531/35/36		A,B,C	BS	
	6.4	Battery voltage / Battery capacity		V/Ah	24V/486Ah-600Ah	
	6.5	Battery weight		kg	Min 450Kg	
	6.6	Power consumption according to VDI cycle		kWh/h	0,955	
Additional data	8.1	Speed regulation			AC Traction	
	10.1	Operating pressure attachments		bar		
	10.2	Oil flow for attachments		l/min		
	10.7	Noise level at operator's ear, according to EN 12 053		db(A)	57	