



EFL 25/30/35 ^{PRO}

80V LI-ION 4-WHEEL YARD FORKLIFT
2500/3000/3500KG



EP EQUIPMENT ^{PRO}



EP EQUIPMENT CO.,LTD

V2511.01

www.ep-equipment.com

Email: info@ep-ep.com

NO.121 YongHua Street, Shi Qiao Road, Gong Shu Qu, Hangzhou, China



EP EQUIPMENT CO.,LTD

www.ep-equipment.com

EFL 25/30/35 **PRO**

The Final Argument to Transform IC to Electric

Since 2020, EP Equipment has been the pioneer who ignited go-electric revolution in the material handling industry by creating the world's first IC-to-E EFL 2 Series forklifts. In 2025, owing to the accumulation of 5 years of relentless innovation, EP proudly presents the EFL PRO Series. Born from our groundbreaking EFL 2 Series and the best-selling EFL 3 Series, the 4th Generation is not merely an upgrade - it's a strategic re-engineering of efficiency and intelligence.

Designed to accelerate the global shift from diesel dependence to lithium-powered fleets, this EFL PRO series combines the class-leading performance, the sleek appearance, the zero-mission intelligence, the user-centered configurations as well as the robustness of IC chassis. The EFL PRO Series doesn't just replace diesel - it redefines electric efficiency.

EP EQUIPMENT **PRO**





Revolutionary Modular Li-ion Battery System

At the core lies EP's breakthrough Li-ion technology — the new modular Li-ion battery system. It is composed of three independent battery modules operating in series and reaching 80V. Each unit works autonomously, ensuring consistent performance and reliability.

For growing operations, battery capacity can be easily increased by adding additional battery modules, a process that can be performed directly by the dealer without any chassis modifications. This modular approach allows seamless upgrades from 280Ah up to 648Ah, adapting the EFL PRO endurance to the various applications.

Furthermore, each battery unit can be repaired or replaced separately, avoiding costly full-pack replacements typically required for single-cell failures. This design significantly reduces maintenance costs and eliminates unnecessary downtime — a crucial advantage for high-utilization fleets and just-in-time logistics operations.



The EFL PRO Series is always benefiting from the advantages of Li-ion technology:

- Fast and opportunity charging for extended runtime in multi-shift working environments
- Zero maintenance for low operation costs and no downtime
- Zero carbon or toxic emission compliant with sustainability requirements

For further charging convenience, both integrated charging and external charging port are available on one truck. The dual charging possibility makes it flexible for all kinds of applications needs.

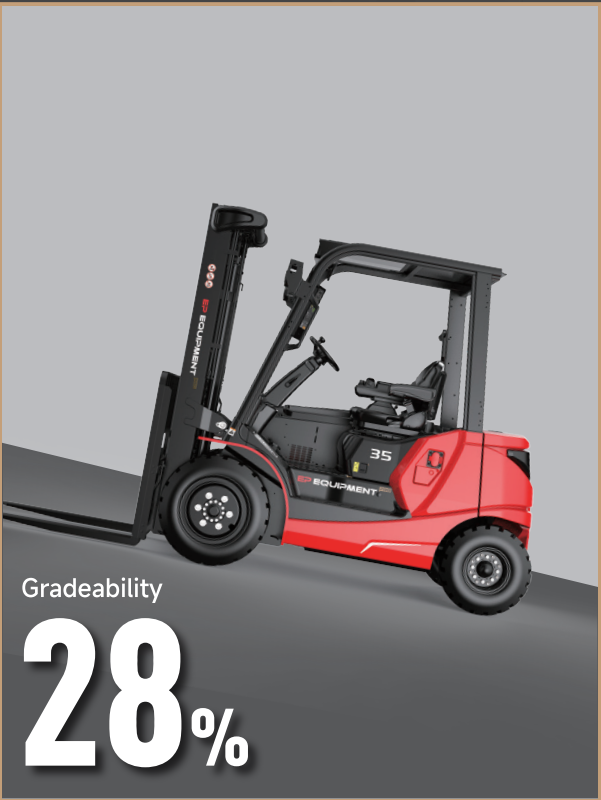


Unmatched Performance and great operator experience

Powered by a 17kW AC driving motor and 30kW PMSM pump motor system, the EFL PRO achieves greater performance compared to the previous EFL 3 Series and competitors of the same class, enabling higher throughput in demanding logistics hubs.

Superior Performance Leap:

		EFL 25 PRO	EFL 30 PRO	EFL 35 PRO
Traveling Speed (laden/unladen)	km/h	11/12	16/17	19/20
Lifting Speed (laden/unladen)	m/s	0.29/0.36	0.4/0.5	0.55/0.58
Lowering Speed (laden/unladen)	m/s	0.4/0.43	0.43/0.44	0.43/0.44
Max Gradeability (laden/unladen)	%	15/15	20/25	22/28
Driving motor rating S2 60min	kW	10	17	17
Lift motor rating at S3 15%	kW	16	26	30



The EFL PRO Series is equipped with an innovative PMSM pump motor for next-level driving experiences:

- Precise rotational speed control brings around 15% energy savings compared to regular AC pump motor for longer runtime and more responsive control.
- Quiet and comfortable operation with the additional silent screw pump.
- Plus the full-proportion solenoid valve as standard, more accurate micro-control is guaranteed.

EP's newly developed 3-stage mast outperforms with better visibility and heavier load capacity at heights. It keeps the full residual capacity up to 4.8m and the load capacity doesn't decrease with built-in sideshifter. This is crucial for high-racking warehouses, improving rack utilization and storage efficiency.

In addition to reliable stacking and retrieving, the new 3-stage mast is also available with the following optional functions for premium safety and efficiency needs:

- One-touch tilt leveling
- Tilt / sideshift speed control at full height
- Overload label
- Load weigh indicator
- Fork height indicator
- Travel speed reduction when elevated



Sleek Appearance with Enhanced Versatility

The EFL PRO Series features a sleek visual-striking appearance and transcends conventional forklift aesthetics through fully molded componentry.

The longer wheelbase of 1753mm delivers better truck stability even when loading heavily or at a sharp turn. Meanwhile, the overall dimensions including the truck width and turning radius are close to those of EFL 3 Series, which provides versatility in diverse scenarios.

The LED lighting system enhances the modern design philosophy and strong adaptability in complex working environments. The high-lumen lights pierce fogged or dimly lit warehouses for better visibility and safety.

- LED Front lights
- New rear light package: working light, turning light, warning light, position light and blue light.



Ergonomic Cabin for Fatigue-free and Convenient Operation

Spacious Driving Space

- Easy entrance and exit thanks to an extra wide step
- Spacious legroom of Spacious legroom of 524 mm



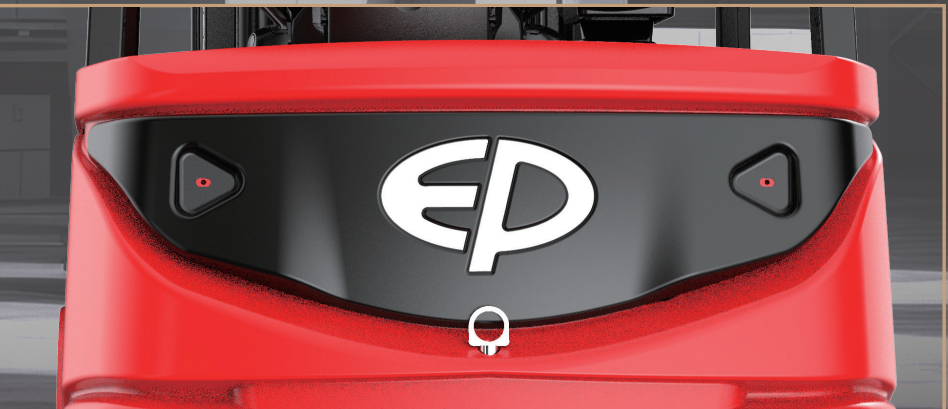
Intuitive driving experience

- Electronic parking brake with automatic stop on ramp function
- Reduced size steering wheel
- Hydraulic accumulator eliminates the steering wheel kickback risks.
- Tempered glass roof for great visibility and sunroof for outdoor usage
- Storage compartments, pocket and bottle holder



Easy maintenance

Power and auxiliaries controllers are positioned in a protected area easily reachable by removable panels for a convenient maintenance.



Grammer Suspension Seat (optional)

For higher vibration absorption and driving comfort the standard suspended seat can be upgraded with the best in class Grammer seat



State of the art controls on the armrest

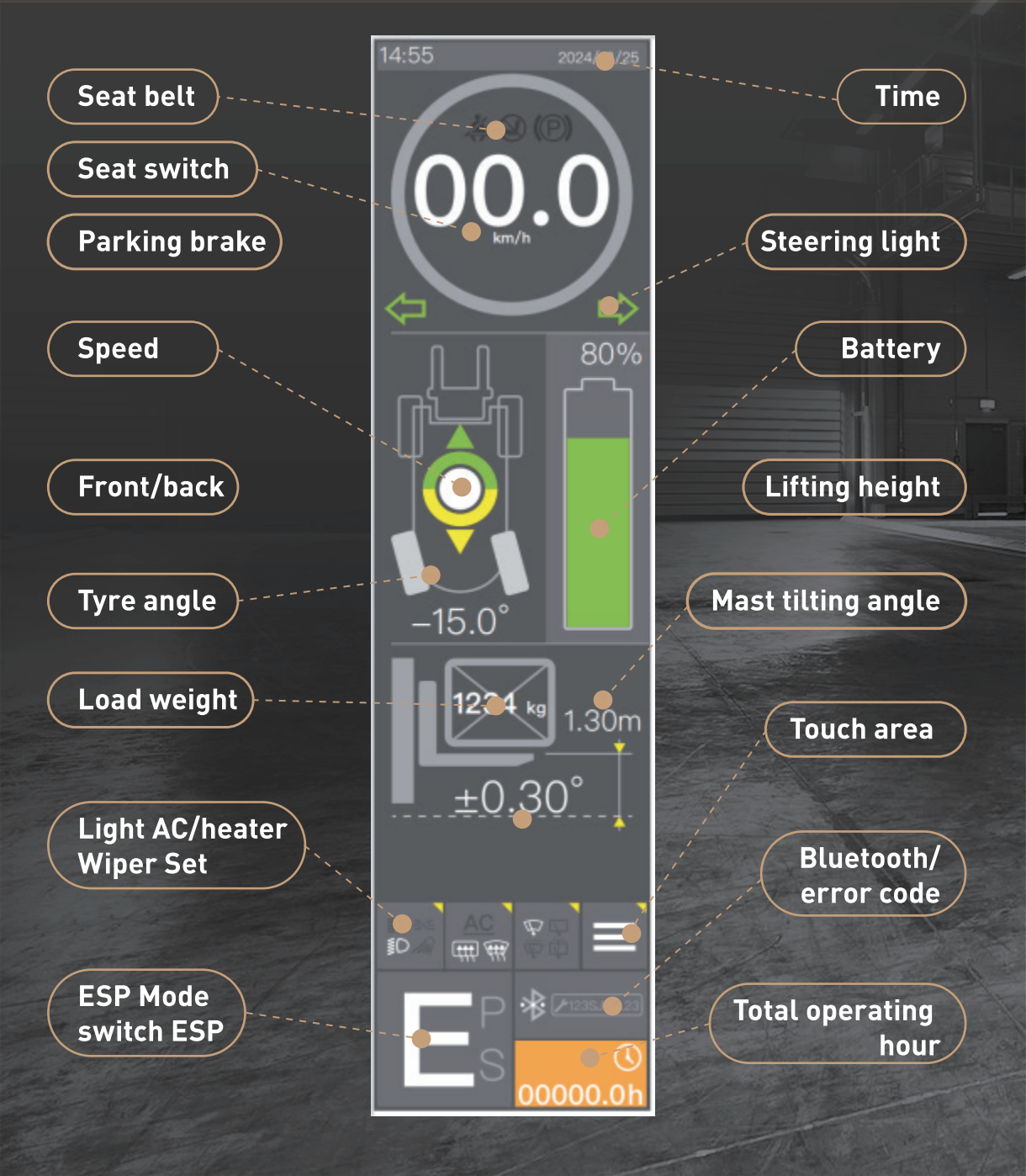
- Multiple functions are integrated at the palm-size end:
 - Fingertips control: including forward/reverse, lifting/lowering, tilting, sideshift, 4th hydraulic control
 - Horn button
 - Emergency switch
 - Fork leveling
 - Clamp interlock button
 - 5th way button switch
 - Turning light switch
- Storage box and USB port for daily convenience



Digital and Safety-aware Intelligence

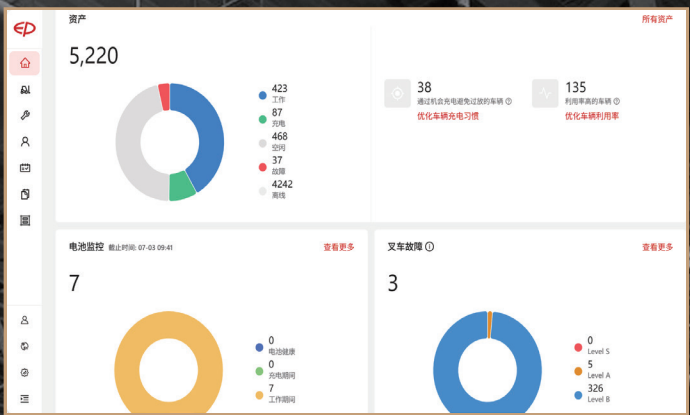
The EFL PRO Series integrates cutting-edge digital technology with AI-driven responsiveness, engineered for real-world productivity and safety.

Informative and Multi-functional Full-touch Display



Telematics System

EP's Telematics system is an innovative system that allows you to manage your fleet and rental activities in an effective and efficient manner. The system tracks data for truck and battery usage, like uptime, battery status and real-time location. It allows users to monitor and analyze assets conditions, providing remote diagnostics and improving the efficiency of fleet management.



360°Panorama System (optional)

The 360° panorama system is an integrated multi-camera monitoring platform and provides real-time visualization of the surroundings, eliminating blind spots at full zones. It significantly reduces rack, equipment or personnel strikes, perfect for high-density warehousing and dock operations.

The 360° panorama system supports one AI module per truck as following:
Human Recognition: Utilizing AI vision processing, the system frames detected humans on the display. Audible alerts activate immediately upon human detection within the alarm activation distance (default: 4-meter radius).

Collision Warning: When an obstacle enters the preset protection zone (default radius: 2m), the system triggers an escalating audible alarm - buzzer frequency dynamically increases as the obstacle approaches.



Turn Speed Control

Auto -deceleration at turns for truck stability even when loading heavily or driving too fast



Ambient-noise Adaptive Buzzer (optional)

Self-adjusts reverse buzzer volume automatically in different environments for more effective reminding.



Zone Speed Adaption (optional)

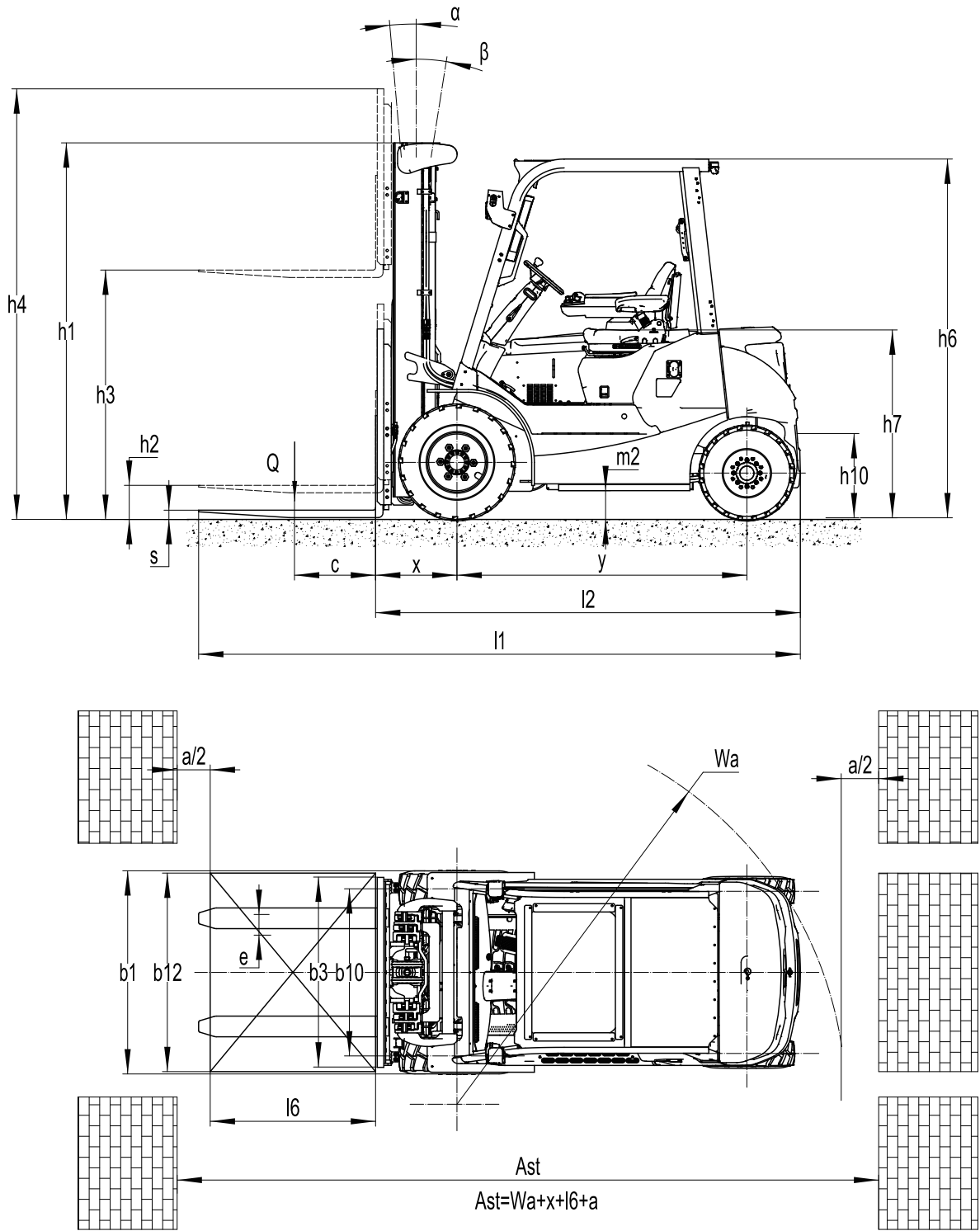
Identifies indoor and outdoor environments via LiDAR scan and automatically decelerates in indoor spaces for operation safety.

EFL 25/30/35 PRO

80V Li-ion 4-wheel yard forklift 2500/3000/3500kg

Distinguishing mark	1.1	Manufacturer			EP	EP	EP
	1.2	Model designation			EFL 25 PRO	EFL 30 PRO	EFL 35 PRO
	1.3	Drive			Electric	Electric	Electric
	1.4	Operator type			Seated	Seated	Seated
	1.5	Load capacity	Q	kg	2500	3000	3500
	1.6	Load center distance	c	mm	500	500	500
	1.8	Load distance, centre of drive axle to fork	x	mm	495	481	486
	1.9	Wheelbase	y	mm	1730	1753	1753
Service weight	2.1	Service weight		kg	4450	4800	5250
	2.2	Axle loading, laden front/rear		kg	6065/885	6923/873	7748/1002
	2.3	Axle loading, unladen front/rear		kg	2127/2323	2234/2566	2267/2983
Tyres/chassis	3.1	Tyre type			Pneumatic	Pneumatic	Pneumatic
	3.2	Tyre size, front			7.00-12-12PR	28X9-15-14PR	28X9-15-14PR
	3.3	Tyre size, rear			6.00-9-10PR	6.50-10-10PR	6.50-10-10PR
	3.5	Wheels, number front/rear (x=drive wheels)		mm	2x/ 2	2x/ 2	2x/ 2
	3.6	Tread width, front		mm	975	1010	1010
Dimensions	3.7	Tread width, rear	b10	mm	945	980	980
	4.1	Tilt of mast/fork carriage forward/backward	b11	°	6/ 6	6/ 6	6/ 6
	4.2	Retracted mast height	h3	mm	2090	2065	2065
	4.3	Free lift	h14	mm	195	135	135
	4.4	Lift height	h13	mm	3000	3000	3000
	4.5	Height, mast extended	l1	mm	4060	4130	4130
	4.7	Height of overhead guard (cabin)	l2	mm	2170	2170	2170
	4.8	Seat height/standing height	b1/b2	mm	1138	1138	1138
	4.12	Tow coupling height	s/e/l	mm	510	510	510
	4.19	Overall length	b5	mm	3610	3627	3682
	4.20	Length to face of forks	m2	mm	2540	2557	2612
	4.21	Overall width	Ast	mm	1154	1210	1210
	4.22	Fork dimensions	Ast	mm	40×122×1070	45×122×1070	50×122×1070
	4.23	A,B Fork carriage class/type A, B	Wa		2A	3A	3A
	4.24	Fork carriage width		mm	1040	1100	1100
	4.31	Ground clearance, laden, below mast		mm	130	130	130
	4.32	Ground clearance, center of wheelbase		mm	165	165	165
	4.34.1	Aisle width for pallets 1000×1200 crossways		mm	3955	4033	4081
	4.34.2	Aisle width for pallets 800×1200 lengthways		mm	4155	4233	4281
	4.35	Turning radius		mm	2260	2352	2395
Performance data	5.1	Travel speed, laden/unladen		km/h	19/20	19/20	19/20
	5.2	Lifting speed, laden/unladen		m/s	0.55/0.58	0.55/0.58	0.52/0.55
	5.3	Lowering speed, laden/unladen		m/s	0.54/0.56	0.43/0.44	0.43/0.44
	5.8	Max. gradeability, laden/unladen		%	22/28	22/28	20/28
	5.10	Service brake			Hydraulic	Hydraulic	Hydraulic
	5.11	Parking brake			Electromagnetic	Electromagnetic	Electromagnetic
Electric-engine	6.1	Drive motor rating S2 60 min		kW	15	17	17
	6.2	Lift motor rating at S3 15%		kW	30	30	30
	6.4	Battery voltage/nominal capacity		V/Ah	80V280AH	80V280AH	80V280AH
Addition data	8.1	Type of drive control			AC	AC	AC
	10.1	Operating pressure for attachments		bar	180	180	180
	10.2	Oil volume for attachments		ℓ/min	35	35	35
	10.5	Steering design			Hydraulic	Hydraulic	Hydraulic
	10.7	Sound pressure level at the driver's ear		dB(A)	<70	<70	<70

EFL 25/30/35 PRO



Mast Option:

EFL 25 PRO

Mast types	Lift height (h3)	Height, Mast			Height,Free lift(h2)	
		Height, mast lowered(h1)	Height, mast extended(h4)		No backrest	With backrest
			No backrest	With backrest		
2-Standard Mast	mm	mm	mm	mm	mm	mm
	3000	2090	3595	4060	195	195
	3300	2240	3895	4360	195	195
	3500	2340	4095	4560	195	195
	3600	2390	4195	4660	195	195
2-Free Mast	4000	2640	4595	5060	195	195
	4500	2890	5095	5560	195	195
	3000	2035	3765	4100	1345	1010
	3300	2185	4065	4400	1495	1160
	3600	2335	4365	4700	1645	1310
3-Free Mast	4300	2080	5040	5355	1370	1055
	4500	2160	5280	5595	1450	1135
	4800	2265	5580	5895	1555	1240
	5000	2350	5730	6045	1640	1325
	5500	2600	6230	6545	1890	1575
	6000	2850	6730	7045	2140	1825

EFL 30 PRO

Mast types	Lift height (h3)	Height, Mast			Height,Free lift(h2)	
		Height, mast lowered(h1)	Height, mast extended(h4)		No backrest	With backrest
			No backrest	With backrest		
2-Standard Mast	mm	mm	mm	mm	mm	mm
	2700	1915	3365	3830	135	135
	3000	2065	3665	4130	135	135
	3300	2215	3965	4430	135	135
	3500	2315	4165	4630	135	135
	3600	2365	4265	4730	135	135
2-Free Mast	4000	2615	4665	5130	135	135
	4500	2865	5165	5630	135	135
	3000	2090	3715	4175	1455	995
	3300	2195	4015	4475	1560	1100
	3600	2345	4315	4775	1710	1250
3-Free Mast	4300	2080	5030	5435	1390	985
	4500	2160	5270	5675	1470	1065
	4800	2265	5570	5975	1575	1170
	5000	2350	5720	6125	1660	1255
	5500	2600	6220	6625	1910	1505
	6000	2850	6720	7125	2160	1755

EFL 35 PRO

Mast types	Lift height (h3)	Height, Mast			Height,Free lift(h2)	
		Height, mast lowered(h1)	Height, mast extended(h4)		No backrest	With backrest
			No backrest	With backrest		
2-Standard Mast	mm	mm	mm	mm	mm	mm
	2700	1915	3365	3830	135	135
	3000	2065	3665	4130	135	135
	3300	2215	3965	4430	135	135
	3500	2315	4165	4630	135	135
	3600	2365	4265	4730	135	135
2-Free Mast	4000	2615	4665	5130	135	135
	4500	2865	5165	5630	135	135
	3000	2045	3715	4175	1455	950
	3300	2195	4015	4475	1560	1100
	3600	2345	4315	4775	1710	1250
3-Free Mast	4300	2080	5030	5435	1390	985
	4500	2160	5270	5675	1470	1065
	4800	2265	5570	5975	1575	1170
	5000	2350	5720	6125	1660	1255
	5500	2600	6220	6625	1910	1505
	6000	2850	6720	7125	2160	1755

Option:

Itens opcionais	EFL 25 PRO
Fork dimension	○122*40*920●122*40*1070○122*40*1150○122*40*1220 ○122*40*1370○122*40*1500○122*40*1600○122*40*1700 ○122*40*1820○122*40*1900○122*40*2000○122*40*2200
Front wheel material	● Pneumatic○ Normal solid○ Traceless solid
Rear wheel material	● Pneumatic○ Normal solid○ Traceless solid
Battery capacity	●80V280AH○80V560AH○80V648AH
Charger	○80V35A integrated○80V60A integrated○80V60A external ○80V100A external○80V150A external○80V200A (560AH) external
Battery display indicator (BDI)	●With time (Bluetooth)
Seat type	●comfortable + safety belt switch (41) ○seat with armrest with safety belt swich○GRAMMER-MSG65
Attachments	○ Built-in sideshifter○ External shifter○ Fork positioner with sideshift ○ External shifter with adjustable forks○ clamp
clamp interlock	● No○clamp interlock
Traction pin	● Yes and not customized
Anti-static chain	● Yes and not customized
Front lamp	●LED
Rear lamp	●No○LED
Warning lamp	● Yes and not customized
Turn signal light	●LED
Blue lamp	● No○Rear○Front and rear
Area warning lamp	● No○Both side○Both side and rear
Rearview mirror	● one in front○ two on sides○ two on side and one in front
Buzzer	● Yes and not customized
OPS system	● Yes and not customized
USB interface	● Cigarette lighter+USB with A and C type
Telematics	● Yes and not customized○No
Speed reduction for elevated mast- Australian standard	● No○ Yes and not customized
Turn speed control	● Yes and not customized○ No
Operator identification device	● No○ Card reader
Lifting electronic limit	● No○ Yes and not customized
Hydraulic control	● joystick○ fingertip
Rear armrest horn	● Yes and not customized
Electronic Parking	● Yes and not customized
Tire lug nut looseness warning	● No○ Yes and not customized
Forward tilt speed limit	● No○ Yes and not customized
High-position lateral shift speed control	● No○ Yes and not customized
Tilt Leveling Option	● No○ Yes and not customized
Reversing Collision Warning System	● No○ Yes and not customized
Human recognition system	● No○ Yes and not customized
Area Speed Limit System	● No○ Yes and not customized
Weighing system	● No○ Yes and not customized
360 panoramic image	● No○ Yes and not customized
Cabin	● Noo Basic semi-enclosed cabin o Upgraded semi-enclosed cabino Full cabin
Overhead guard	● Strip glass with anti-explosion film○ Panoramic glass roof
Wiper water unit	● Yes only with Cabin
Note: ●Standard ○ Optional - Inconformity:	

Option:

Itens opcionais	EFL 30 PRO
Fork dimension	●122*45*1070○122*45*1150○122*45*1220○122*45*1370 ○122*45*1520○122*45*1600○122*45*1700○122*45*1820 ○122*45*2000○122*45*2200○122*45*2400
Front wheel material	● Pneumatic○ Normal solid○ Traceless solid
Rear wheel material	● Pneumatic○ Normal solid○ Traceless solid
Battery capacity	●80V280AH○80V560AH○80V648AH
Charger	○80V35A integrated○80V60A integrated○80V60A external ○80V100A external○80V150A external○80V200A (560AH) external
Battery display indicator （BDI）	●With time （Bluetooth）
Seat type	●comfortable + safety belt switch (41) ○seat with armrest with safety belt swich○GRAMMER-MSG65
Attachments	○ Built-in sidershifter○ External shifter○ Fork positioner with sidershift ○ External shifter with adjustable forks○ clamp
clamp interlock	● No○clamp interlock
Traction pin	● Yes and not customized
Anti-static chain	● Yes and not customized
Front lamp	●LED
Rear lamp	●No○LED
Warning lamp	● Yes and not customized
Turn signal light	●LED
Blue lamp	● No○Rear○Front and rear
Area warning lamp	● No○Both side○Both side and rear
Rearview mirror	● one in front○ two on sides○ two on side and one in front
Buzzer	● Yes and not customized
OPS system	● Yes and not customized
USB interface	● Cigarette lighter+USB with A and C type
Telematics	● Yes and not customized○No
Speed reduction for elevated mast- Australian standard	-
Turn speed control	● Yes and not customized○ No
Operator identification device	● No○ Card reader
Lifting electronic limit	● No○ Yes and not customized
Hydraulic control	● joystick○ fingertip
Rear armrest horn	● Yes and not customized
Electronic Parking	● Yes and not customized
Tire lug nut looseness warning	● No○ Yes and not customized
Forward tilt speed limit	● No○ Yes and not customized
High-position lateral shift speed control	● No○ Yes and not customized
Tilt Leveling Option	● No○ Yes and not customized
Reversing Collision Warning System	● No○ Yes and not customized
Human recognition system	● No○ Yes and not customized
Area Speed Limit System	● No○ Yes and not customized
Weighing system	● No○ Yes and not customized
360 panoramic image	● No○ Yes and not customized
Cabin	● Noo Basic semi-enclosed cabin o Upgraded semi-enclosed cabino Full cabin
Overhead guard	● Strip glass with anti-explosion film○ Panoramic glass roof
Wiper water unit	● Yes only with Cabin
Note: ●Standard ○ Optional - Inconformity:	

Option:

Itens opcionais	EFL 35 PRO
Fork dimension	●122*50*1070○122*50*1150○122*50*1220○122*50*1370 ○122*50*1520○122*50*1600○122*50*1700○122*50*1820 ○122*50*2000○122*50*2200○122*50*2420
Front wheel material	● Pneumatic○ Normal solid○ Traceless solid
Rear wheel material	● Pneumatic○ Normal solid○ Traceless solid
Battery capacity	●80V280AH○80V560AH○80V648AH
Charger	○80V35A integrated○80V60A integrated○80V60A external ○80V100A external○80V150A external○80V200A (560AH) external
Battery display indicator （BDI）	●With time （Bluetooth）
Seat type	●comfortable + safety belt switch (41) ○seat with armrest with safety belt swich○GRAMMER-MSG65
Attachments	○ Built-in sidershifter○ External shifter○ Fork positioner with sidershift ○ External shifter with adjustable forks○ clamp
clamp interlock	● No○clamp interlock
Traction pin	● Yes and not customized
Anti-static chain	● Yes and not customized
Front lamp	●LED
Rear lamp	●No○LED
Warning lamp	● Yes and not customized
Turn signal light	●LED
Blue lamp	● No○Rear○Front and rear
Area warning lamp	● No○Both side○Both side and rear
Rearview mirror	● one in front○ two on sides○ two on side and one in front
Buzzer	● Yes and not customized
OPS system	● Yes and not customized
USB interface	● Cigarette lighter+USB with A and C type
Telematics	● Yes and not customized○No
Speed reduction for elevated mast- Australian standard	-
Turn speed control	● Yes and not customized○ No
Operator identification device	● No○ Card reader
Lifting electronic limit	● No○ Yes and not customized
Hydraulic control	● joystick○ fingertip
Rear armrest horn	● Yes and not customized
Electronic Parking	● Yes and not customized
Tire lug nut looseness warning	● No○ Yes and not customized
Forward tilt speed limit	● No○ Yes and not customized
High-position lateral shift speed control	● No○ Yes and not customized
Tilt Leveling Option	● No○ Yes and not customized
Reversing Collision Warning System	● No○ Yes and not customized
Human recognition system	● No○ Yes and not customized
Area Speed Limit System	● No○ Yes and not customized
Weighing system	● No○ Yes and not customized
360 panoramic image	● No○ Yes and not customized
Cabin	● Noo Basic semi-enclosed cabin o Upgraded semi-enclosed cabino Full cabin
Overhead guard	● Strip glass with anti-explosion film○ Panoramic glass roof
Wiper water unit	● Yes only with Cabin
Note: ●Standard ○ Optional - Inconformity:	